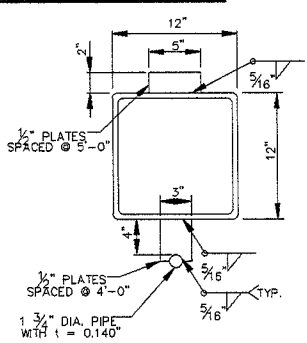
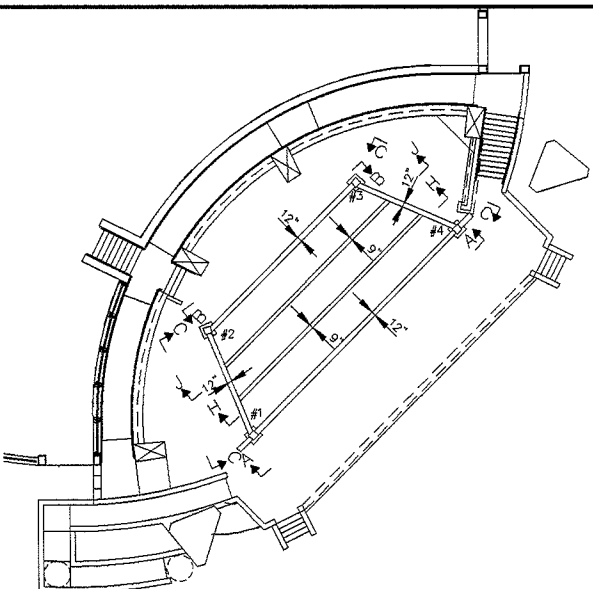
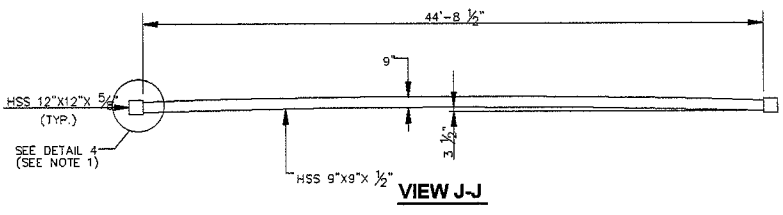
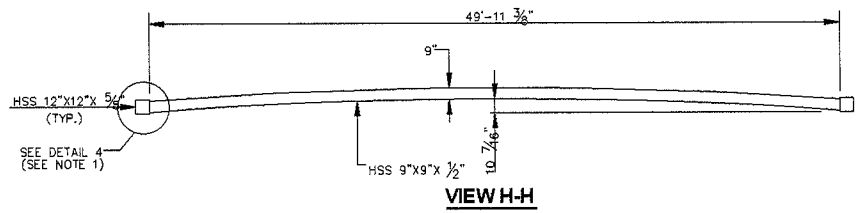
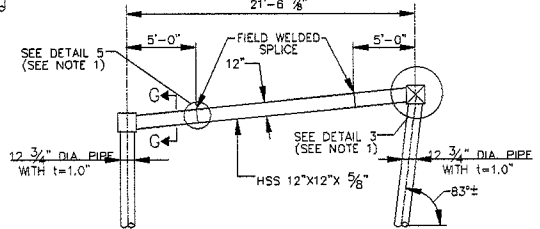
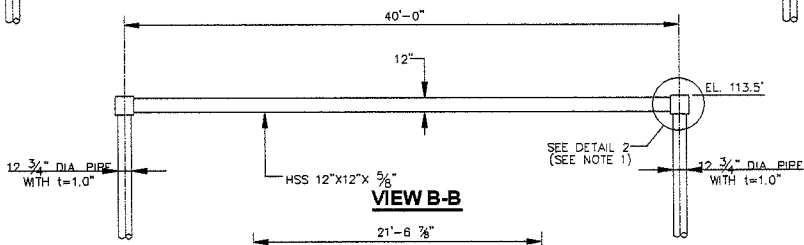
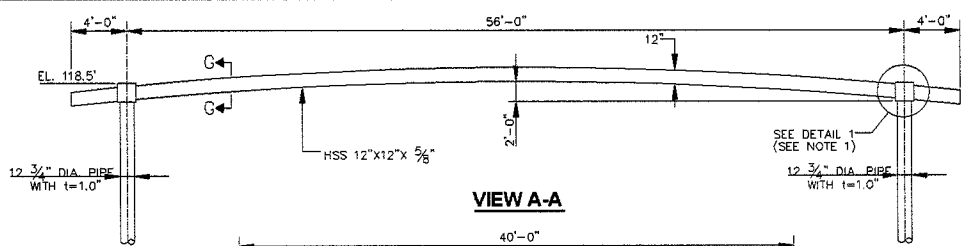


# Exhibit 2 - Lighting Truss & Stage Details

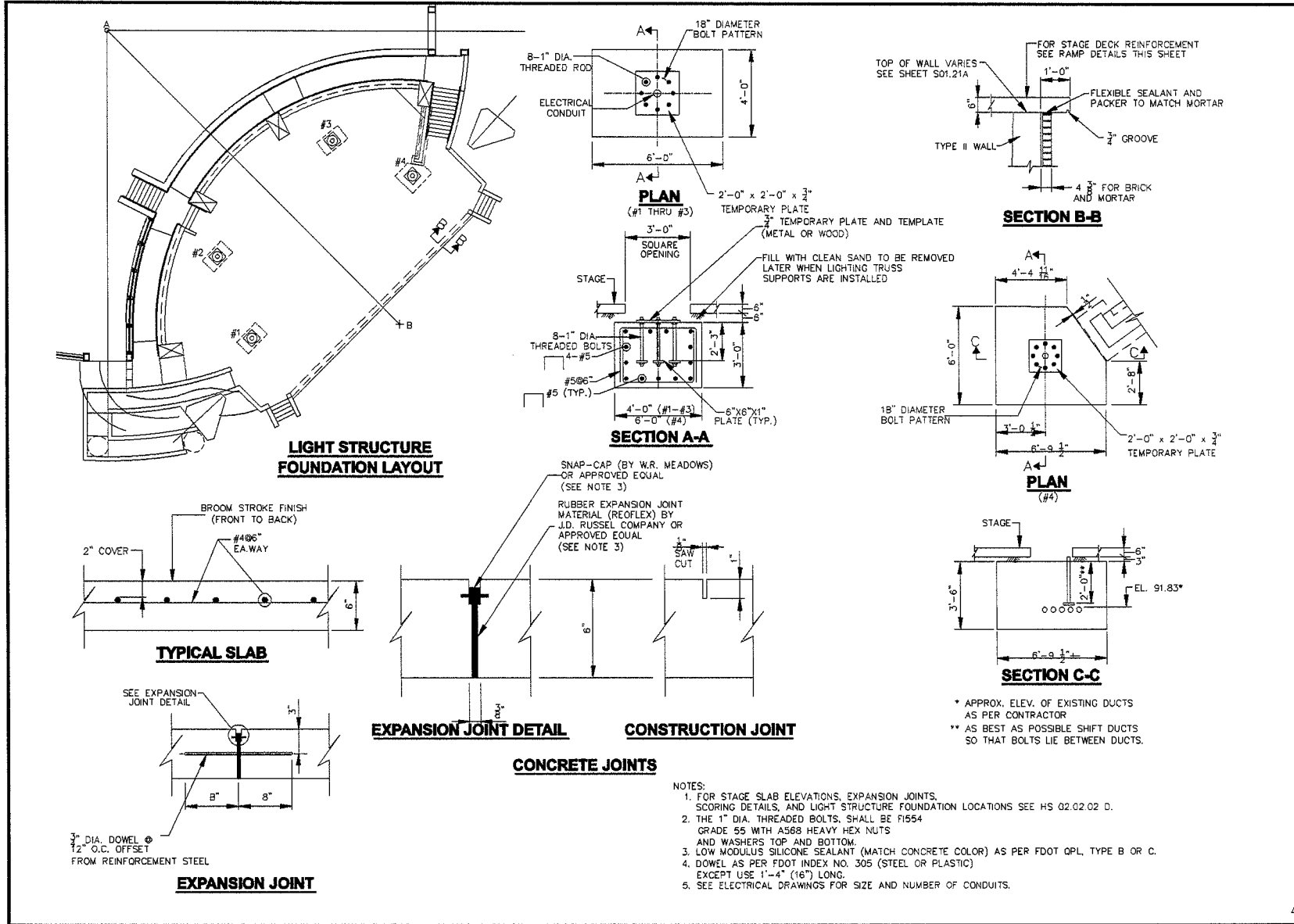


NOTES:  
 1. FOR DETAILS 1, 2, 3, 4 AND 5, SEE SHEET S01.19G.  
 2. ALL EXPOSED SURFACES OF THE TRUSS SHALL BE PAINTED WITH SHERWIN WILLIAMS HIGH SOLIDS POLYURETHANE - COLOR: B55W351.



PROJECT NUMBER BFD0505	PROJECT NAME RUSSELLS	PROJECT NO. A.R.G.	DATE 12-17-01	SCALE N.T.S.	DRAWN BY T.B.B.
DESIGNED BY A.L.O.	CHECKED BY A.L.O.	APPROVED BY A.L.O.	DATE 12-17-01		
<p style="margin: 0;">THE ROOBER CENTER                  1100 N. UNIVERSITY AVENUE                  SUITE 100                  TALLAHASSEE, FLORIDA 32310                  (904) 941-7748 (904) 941-7989 FAX</p>					
 GARCIA ENGINEERS P.A. 1100 N. UNIVERSITY AVENUE SUITE 100 TALLAHASSEE, FLORIDA 32310 (904) 941-7748 (904) 941-7989 FAX	 BLUEPRINT CONSTRUCTION PLANS				
<p style="margin: 0;"><b>LIGHTING TRUSS AND STAGE DETAILS</b>  <b>CAPITAL CASCADE TRAIL CONSTRUCTION PLANS</b></p>					
<p style="margin: 0;">ISSUED FOR BIDDING</p>					
<p style="margin: 0;">S01.19F</p>					

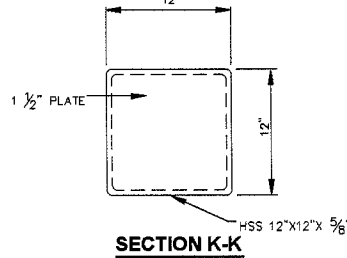
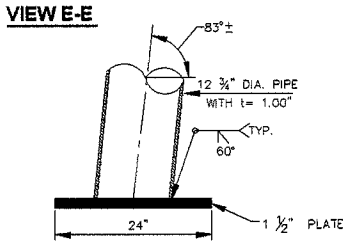
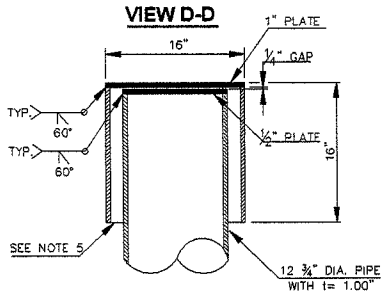
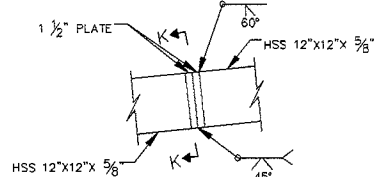
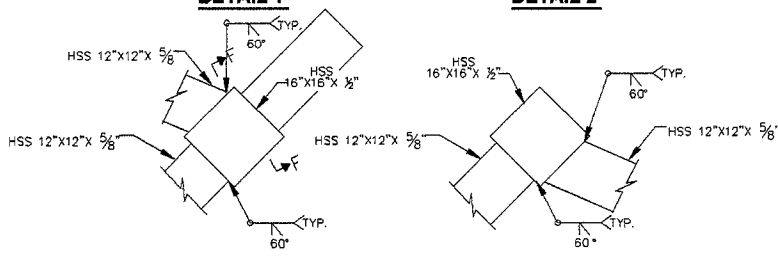
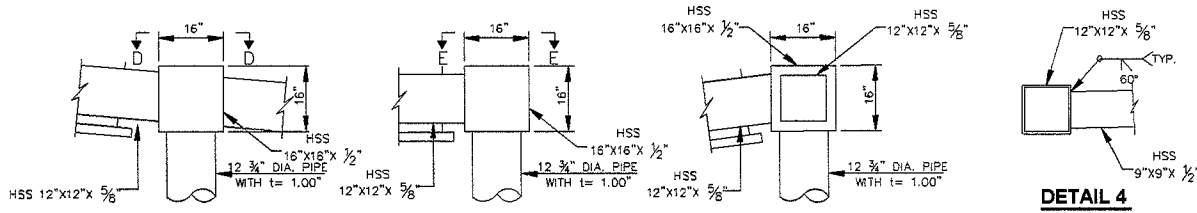
# Exhibit 2 - Lighting Truss & Stage Details



PROJECT NO.	REVISIONS	PROJECT NUMBER	DATE
DATE	BY	DATE	BY
DESIGNED BY	Y.A.	SCALE	AS SHOWN
CHECKED BY	Y.A.	DATE	08-10-19
DRAWN BY	Y.A.	DATE	08-10-19
PROJECT NAME	CAPITAL CASCADE TRAIL CONSTRUCTION PLANS		
PROJECT LOCATION	TALLAHASSEE, FLORIDA, USA		
PROJECT OWNER	GARCIA		
PROJECT ARCHITECT	BLUEPRINT CONSTRUCTION		
PROJECT ENGINEER	GARCIA		
PROJECT CONTRACTOR	GARCIA		
PROJECT SUBMITTER	GARCIA		
PROJECT DATE	08-10-19		
PROJECT SCALE	AS SHOWN		
PROJECT SHEET	S01.19E		

ISSUED FOR CONSTRUCTION

## Exhibit 2 - Lighting Truss & Stage Details



- NOTES:**
1. HSS MEMBERS SHALL BE ASTM A500 GRADE C.
  2. 1 1/2" DIA. PIPE SHALL BE ASTM A-53 SCHEDULE 40.
  3. OTHER STRUCTURAL STEEL SHALL BE ASTM A-572 GRADE 50.
  4. PAINT STEEL ACCORDING TO PROJECT SPECIFICATIONS.
  5. USING TWO 1/4" DIA. HOLES AT TOP PLATE FILL SPACE BETWEEN 16"x16"x 1/2" CAN AND 12 3/4" DIA. PIPE WITH AN EPOXY MEETING FDOT 937 HSHV. MINIMUM BOND STRENGTH 1800 PSI. USE FOOT OPL PRODUCT.

<b>REVISIONS</b> NO. DATE BY 1 08-25-2010 T.D.A.	<b>PROJECT NUMBER</b> BFD-506	<b>PROJECT NAME</b> CAPITAL CASCADE TRAIL CONSTRUCTION PLANS	<b>DATE</b> 08-16-10	<b>SCALE</b> N.T.S.	<b>DESIGNER</b> T.D.A.	<b>CHECKER</b> T.D.A.	<b>APPROVER</b> T.D.A.
<b>BLUEPRINT</b> ALL DIMENSIONS CENTER UNLESS OTHERWISE NOTED 1311 INDUSTRIAL CENTER DRIVE ELIOT, OREGON 97122-3908 (503) 770-7400 FAX (503) 770-7300							
<b>GARCIA</b> ENGINEERING & ARCHITECTURE 1311 INDUSTRIAL CENTER DRIVE ELIOT, OREGON 97122-3908 (503) 770-7400 FAX (503) 770-7300							
<b>LIGHTING TRUSS AND STAGE DETAILS</b> <b>CAPITAL CASCADE TRAIL CONSTRUCTION PLANS</b> <b>ISSUED FOR BIDDING</b>							
<b>(S01.19G)</b>							